

2 PIECES BALL VALVES FLANGED ISO PN 16

ISO 9001:2008

BUREAU VERITAS
Certification

- Size :** DN 15 to 200 mm
Ends : ISO PN16/40 R.F. Flanges
Min Temperature : - 20°C
Max Temperature : + 200°C
Max Pressure : 40 Bars up to DN50 (16 bars over)
Specifications : ISO 5211 mounting pad
PTFE filled with glass seat
Anti blow-out stem
Atex
Fire safe according to API607 up to DN150

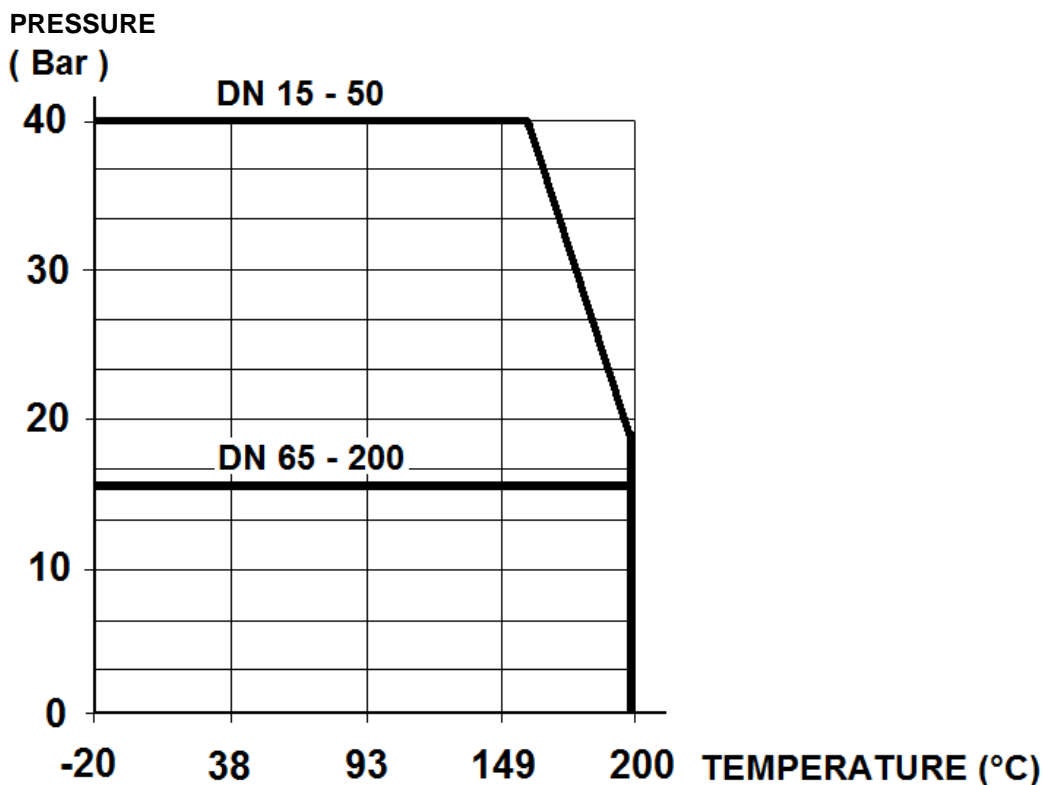
Materials : Carbon steel or Stainless steel

2 PIECES BALL VALVES FLANGED ISO PN 16**SPECIFICATIONS :**

- Full bore
- Anti blow-out stem
- Double antistatic device
- PTFE filled with glass seat
- Locking device
- ISO 5211 mounting pad
- 2 pieces type (Split body)
- Hollowed ball from DN125 to DN200
- Primer coating for carbon steel valves (Ref. 762)

USE :

- Chemical industries, petrochemical industries, hydraulic installation, compressed air, heating and water distribution
- Steam : 11 bars maximum
- Min and max Temperatures Ts : -20°C to + 200°C
- Max Pressure PN : 40 bars up to DN50, 16 bars over (see graph under)

PRESSURE / TEMPERATURE GRAPH (STEAM EXCLUDED) :**RANGE :**

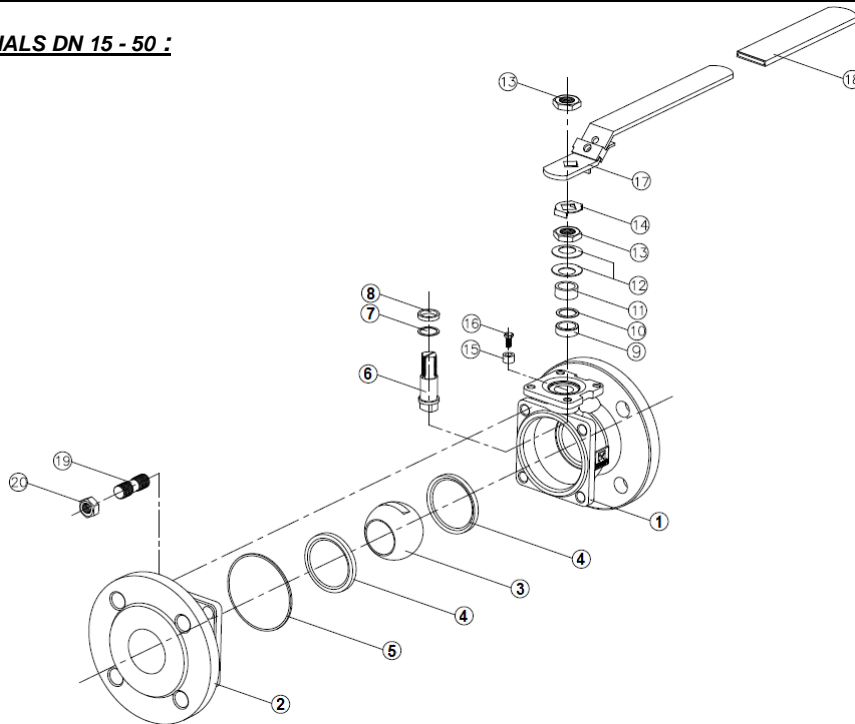
- Carbon steel body **Ref. 762** from DN 15 to DN 200
- Stainless steel body **Ref. 763** from DN 15 to DN 200
- Gearbox possible **Ref. 9830296-9830297** from DN 150 to DN 200

ENDS :

- R.F. Flanged ISO PN40 up to DN50, ISO PN16 over

2 PIECES BALL VALVES FLANGED ISO PN 16

MATERIALS DN 15 - 50 :

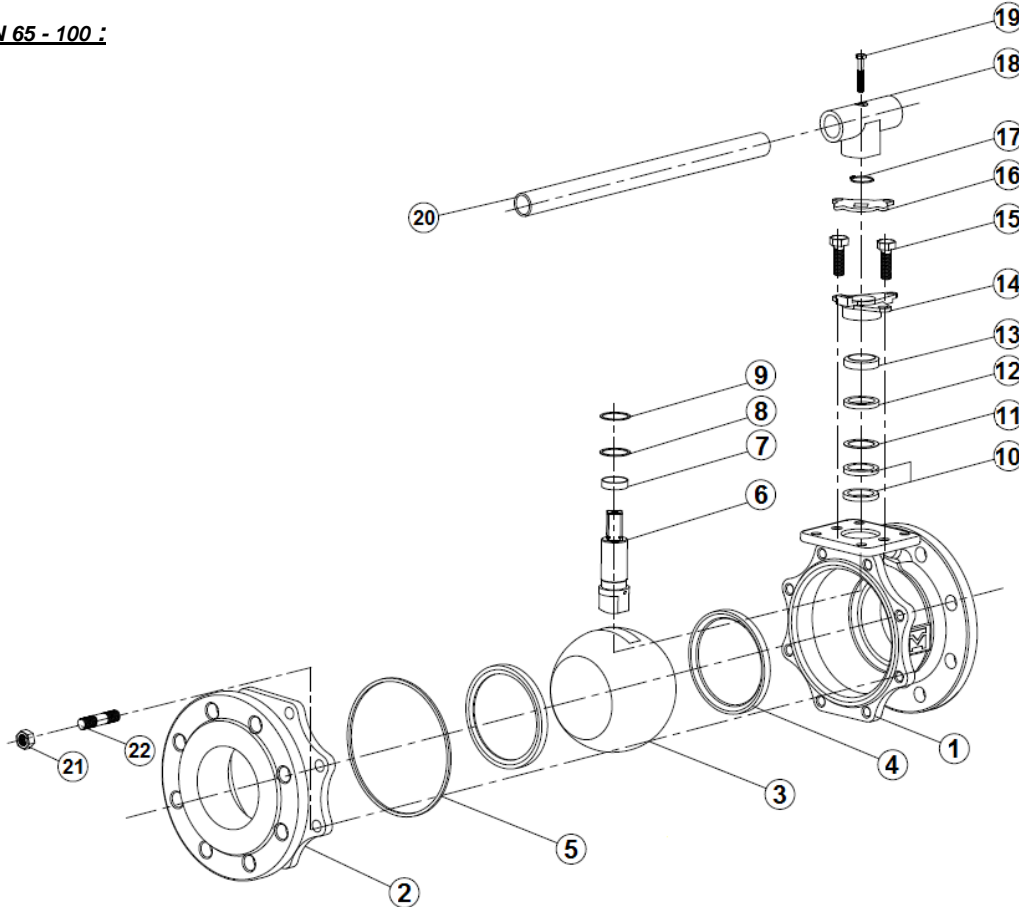


(* : included in gaskets kit)

| Item | Designation | Materials 762 | Materials 763 |
|------|---------------|-------------------------|----------------|
| 1 | Body | ASTM A216 WCB | ASTM A351 CF8M |
| 2 | Ends | ASTM A216 WCB | ASTM A351 CF8M |
| 3 | Ball | ASTM A351 CF8M | |
| 4* | Seat | PTFE filled with glass | |
| 5* | Body seal | Graphite | |
| 6 | Stem | ASTM A276 316 | |
| 7* | Ring | PTFE filled with carbon | |
| 8* | Ring | PTFE filled with carbon | |
| 9* | Packing | Graphite | |
| 10* | Packing | PTFE filled with carbon | |
| 11 | Packing gland | SS 304 | |
| 12 | Elastic ring | SS 301 | |
| 13 | Nut | SS 304 | |
| 14 | Washer | SS 304 | |
| 15 | Pin | SS 304 | |
| 16 | Pin screw | SS 304 | |
| 17 | Handle | SS 304 | |
| 18 | Handle cover | PVC | |
| 19 | Stud | SS 304 | |
| 20 | Nut | SS 304 | |

2 PIECES BALL VALVES FLANGED ISO PN 16

MATERIALS DN 65 - 100 :

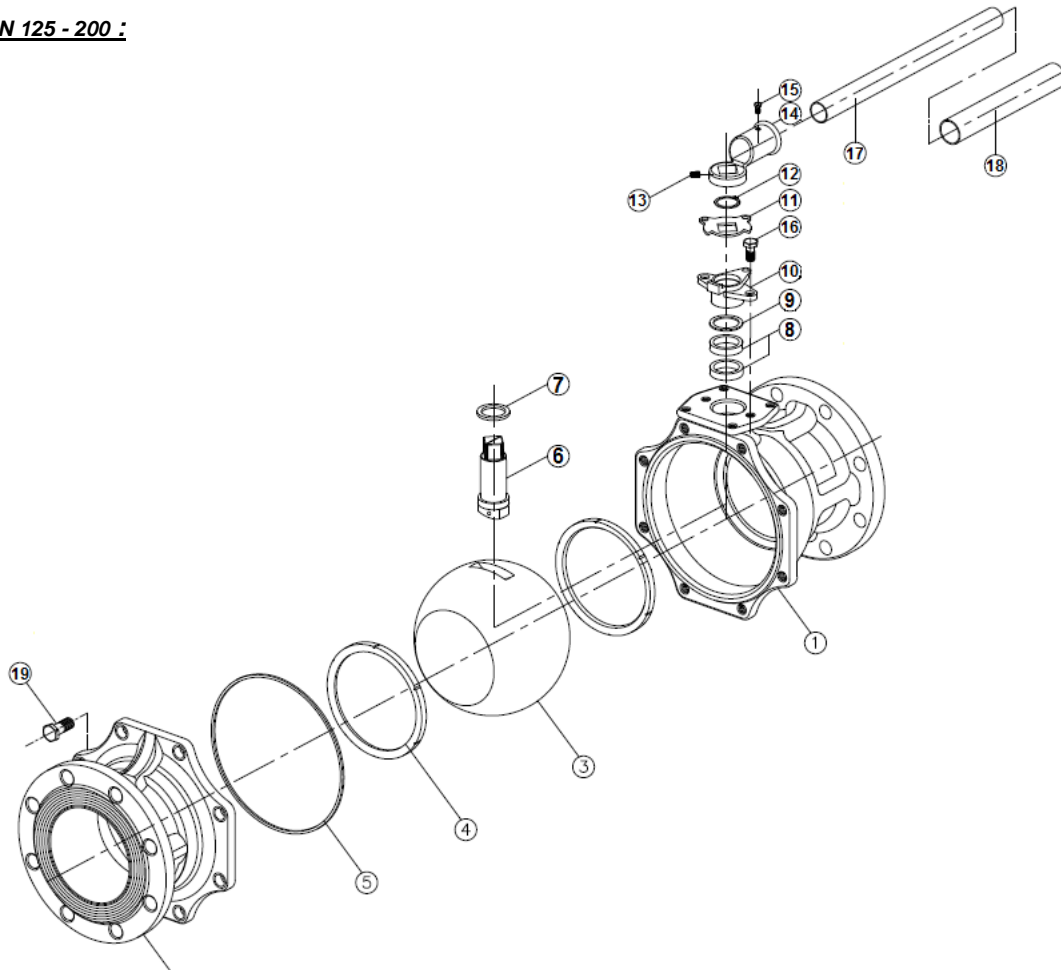


| Item | Designation | Materials 762 | Materials 763 |
|------|---------------------|-------------------------|----------------|
| 1 | Body | ASTM A216 WCB | ASTM A351 CF8M |
| 2 | Ends | ASTM A216 WCB | ASTM A351 CF8M |
| 3 | Ball | ASTM A351 CF8M | |
| 4* | Seat | PTFE filled with glass | |
| 5* | Body seal | Graphite | |
| 6 | Stem | ASTM A276 316 | |
| 7* | Ring | PTFE filled with carbon | |
| 8* | Ring | PTFE filled with carbon | |
| 9* | Ring | PTFE filled with carbon | |
| 10* | Packing | Graphite | |
| 11* | Packing | PTFE filled with carbon | |
| 12 | Ring | SS 304 | |
| 13 | Ring | SS 304 | |
| 14 | Packing gland | ASTM A351 CF8 | |
| 15 | Packing gland screw | SS 304 | |
| 16 | Pin | SS 304 | |
| 17 | Circlips | SS 304 | |
| 18 | Handle adaptor | ASTM A351 CF8 | |
| 19 | Screw | SS 304 | |
| 20 | Handle | Steel | |
| 21 | Nut | SS 304 | |
| 22 | Stud | SS 304 | |

(* : included in gaskets kit)

2 PIECES BALL VALVES FLANGED ISO PN 16

MATERIALS DN 125 - 200 :



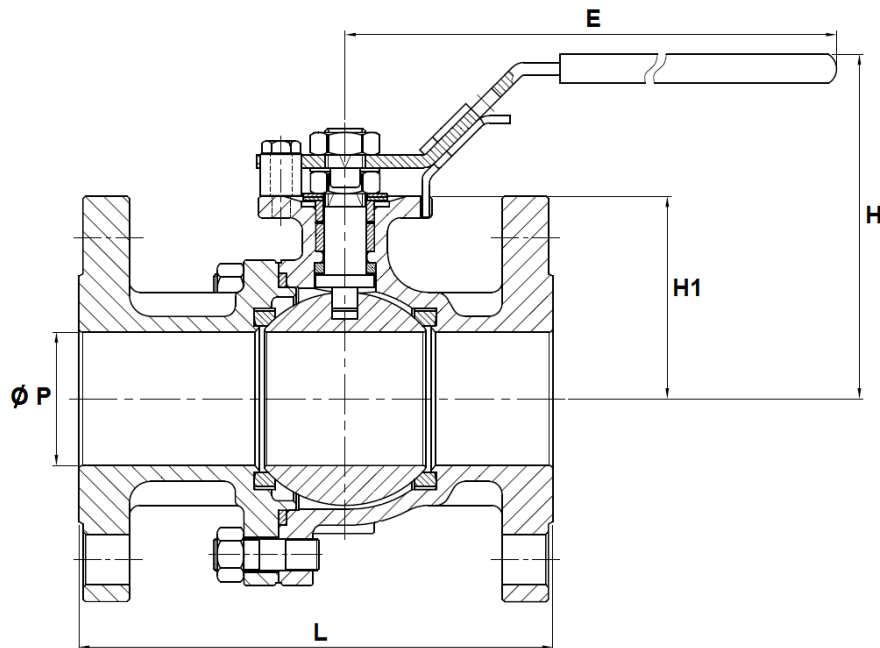
| Item | Designation | Materials 762 | Materials 763 |
|------|---------------------|-------------------------|----------------|
| 1 | Body | ASTM A216 WCB | ASTM A351 CF8M |
| 2 | Ends | ASTM A216 WCB | ASTM A351 CF8M |
| 3 | Ball | SS 316 | |
| 4* | Seat | PTFE filled with glass | |
| 5* | Body seal | Graphite | |
| 6 | Stem | ASTM A276 316 | |
| 7* | Ring | PTFE filled with carbon | |
| 8* | Packing | Graphite | |
| 9* | Packing | PTFE filled with carbon | |
| 10* | Packing gland | ASTM A351 CF8 | |
| 11 | Pin | SS 304 | |
| 12 | Circlips | SS 304 | |
| 13 | Screw | SS 304 | |
| 14 | Handle adaptor | SS 304 | |
| 15 | Screw | SS 304 | |
| 16 | Packing gland screw | SS 304 | |
| 17 | Handle | Steel | |
| 18 | Handle cover | PVC | |
| 19 | Body screw | SS 304 | |

(* : included in gaskets kit)

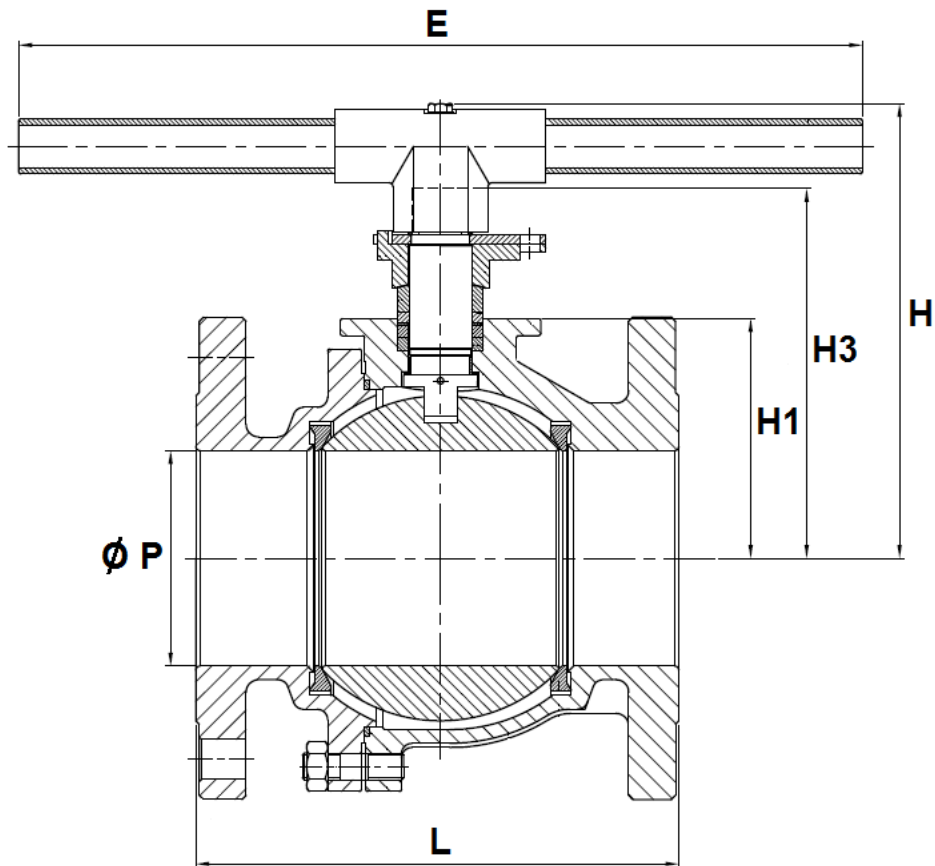
2 PIECES BALL VALVES FLANGED ISO PN 16

SIZE DN 15 - 50 (in mm) :

DN 15 - 50



| Ref. | DN | 15 | 20 | 25 | 32 | 40 | 50 |
|-----------|---------------|------|------|-----|-----|-------|-------|
| 762 / 763 | Ø P | 15 | 20 | 24 | 30 | 38 | 50 |
| | L | 115 | 120 | 125 | 130 | 140 | 150 |
| | E | 158 | 158 | 196 | 196 | 245 | 261 |
| | H | 75.6 | 78.1 | 92 | 96 | 109.1 | 115.6 |
| | H1 | 39 | 42.5 | 52 | 56 | 66 | 73 |
| | Weight (Kg) | 2.3 | 3 | 4 | 5.5 | 7 | 9.3 |

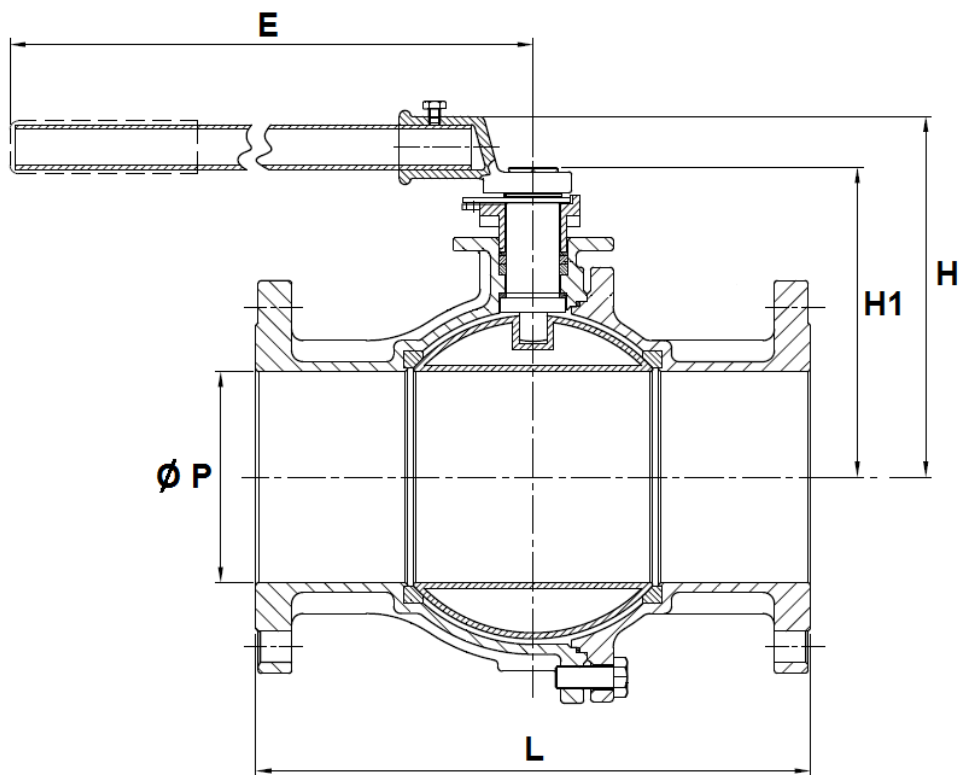
2 PIECES BALL VALVES FLANGED ISO PN 16SIZE DN 65 - 100 (in mm) :**DN 65 - 100**

| Ref. | DN | 65 | 80 | 100 |
|-----------|---------------|------|------|-------|
| 762 / 763 | Ø P | 64 | 76 | 98 |
| | L | 170 | 180 | 190 |
| | E | 400 | 400 | 400 |
| | H | 188 | 194 | 215 |
| | H1 | 86.5 | 91.5 | 113.5 |
| | H3 | 152 | 158 | 179 |
| | Weight (Kg) | 14.4 | 17.5 | 23.3 |

2 PIECES BALL VALVES FLANGED ISO PN 16

SIZE DN 125 - 200 (in mm) :

DN 125 - 200

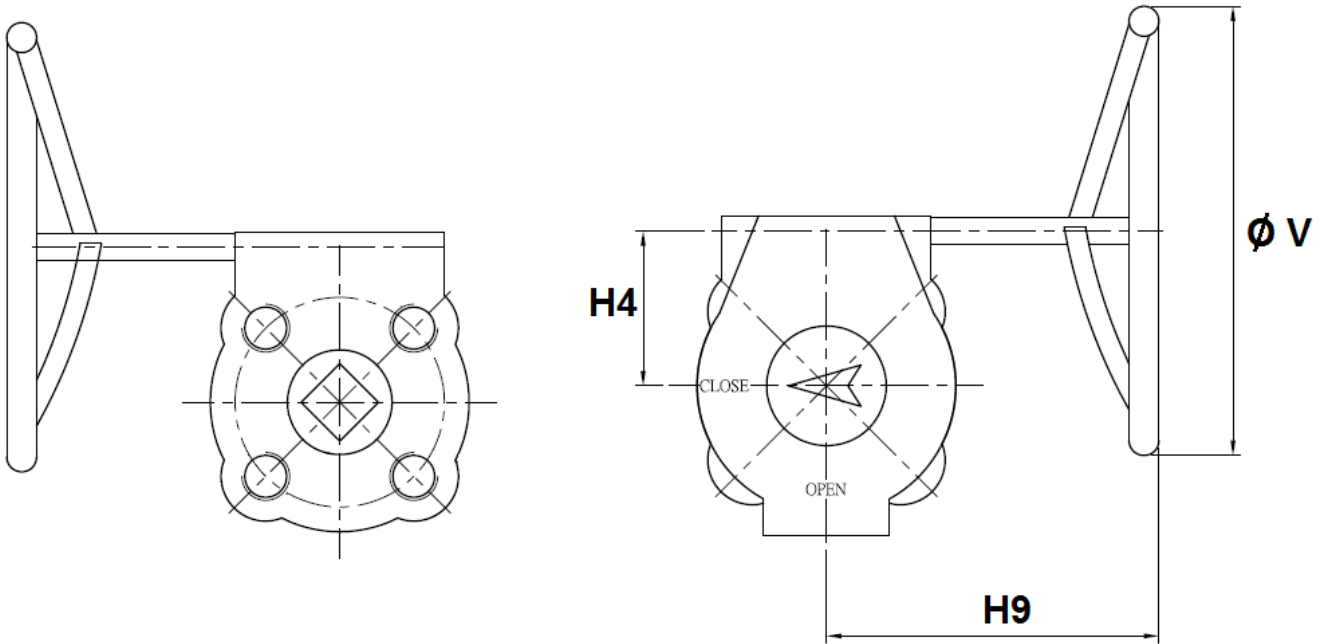


| Ref. | DN | 125 | 150 | 200 |
|-----------|----------------|-------|-------|-------|
| 762 / 763 | Ø P | 125 | 150 | 200 |
| | L | 325 | 350 | 400 |
| | E | 743 | 743 | 925 |
| | H | 239.6 | 256.5 | 323.5 |
| | H1 | 199 | 220 | 286.5 |
| | Weight (in Kg) | 36.7 | 52 | 78 |

FIG. 762 / 763

2 PIECES BALL VALVES FLANGED ISO PN 16

GEARBOX SIZE (in mm) :

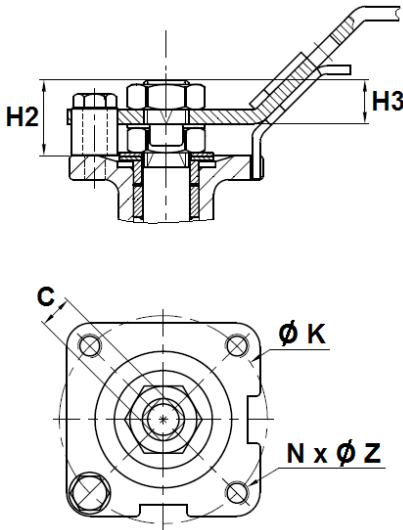


| DN | 150 | 200 |
|---------------|---------|---------|
| H4 | 63 | 78 |
| H9 | 238 | 226 |
| Ø V | 300 | 300 |
| Weight (Kg) | 12.5 | 15 |
| Ref. | 9830296 | 9830297 |

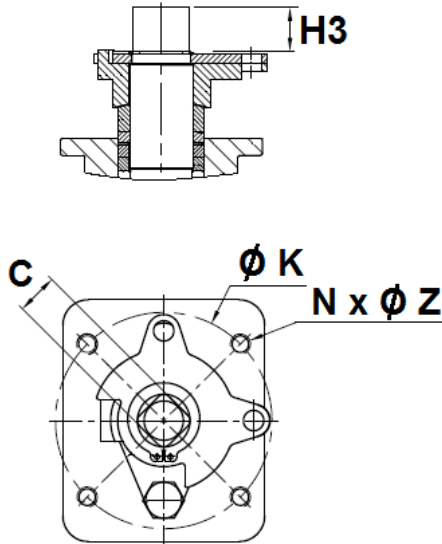
2 PIECES BALL VALVES FLANGED ISO PN 16

ISO MOUNTING PAD AND STEM SIZE (in mm) :

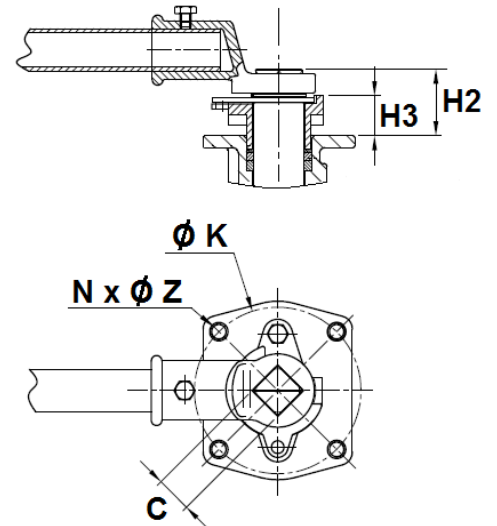
DN 15 – 50



DN 65 – 100



DN 125 - 200



| Ref. | DN | 15 | 20 | 25 | 32 | 40 | 50 | 65 | 80 | 100 | 125 | 150 | 200 |
|-----------|---------|------|------|------|------|------|------|-------|-------|-------|-------|-------|-------|
| 762 – 763 | C | 9 | 9 | 11 | 11 | 14 | 14 | 17 | 17 | 17 | 27 | 27 | 36 |
| | Ø K | 42 | 42 | 50 | 50 | 70 | 70 | 102 | 102 | 102 | 125 | 125 | 140 |
| | ISO | F04 | F04 | F05 | F05 | F07 | F07 | F10 | F10 | F10 | F12 | F12 | F14 |
| | N x Ø Z | 4xM5 | 4xM5 | 4xM6 | 4xM6 | 4xM8 | 4xM8 | 4xM10 | 4xM10 | 4xM10 | 4xM12 | 4xM12 | 4xM16 |
| | H2 | 14.5 | 14 | 18 | 17 | 22 | 21.5 | - | - | - | 52 | 50 | 85.5 |
| | H3 | 8.5 | 8.5 | 12 | 12 | 14 | 14 | 27 | 27 | 27 | 32 | 31 | 30 |

2 PIECES BALL VALVES FLANGED ISO PN 16**FLOW COEFFICIENT Kv (M3/h) :**

| DN | 15 | 20 | 25 | 32 | 40 | 50 | 65 | 80 | 100 | 125 | 150 | 200 |
|-------------|----|----|----|-----|-----|-----|-----|-----|------|------|------|------|
| Kv (m3/h) | 31 | 58 | 86 | 139 | 229 | 415 | 698 | 983 | 1686 | 2824 | 3953 | 7225 |

TORQUE VALUES (in Nm without safety coefficient) :

| DN | 15 | 20 | 25 | 32 | 40 | 50 | 65 | 80 | 100 | 125 | 150 | 200 |
|---------------|----|----|----|----|----|----|----|----|-----|-----|-----|-----|
| Torque (Nm) | 8 | 10 | 12 | 20 | 30 | 40 | 60 | 90 | 130 | 160 | 250 | 500 |

GEARBOX SPECIFICATIONS :

| DN | 150 | 200 |
|----------------------|---------|---------|
| Ref. | 9830296 | 9830297 |
| Ratio factor | 30 :1 | 50 :1 |
| Output torque (Nm) | 700 | 1200 |

STANDARDS :

- Fabrication according to ISO 9001 : 2008
- DIRECTIVE 97/23/CE : CE N° 0035
Risk Category II
- Construction according to EN 12516-1
- Tests according to EN 12266-1, range A
- ISO PN16 R.F. flanges according to EN 1092-1 PN16
- ISO 5211 mounting pad
- Length according to EN 558 series 27 (DIN 3202 F4/F5)
- ATEX Group II Category 2 G/2D Zone 1 & 21 Zone 2 & 22 (optional marking)
- Fire safe according to API 607 5° edition up to DN100, 4° edition from DN125 to DN150

2 PIECES BALL VALVES FLANGED ISO PN 16**INSTALLATION INSTRUCTIONS****GENERAL GUIDELINES :**

- Ensure that the valves to be used are appropriate for the conditions of the installation (type of fluid, pressure and temperature).
- Be sure to have enough valves to be able to isolate the sections of piping as well as the appropriate equipment for maintenance and repair.
- Ensure that the valves to be installed are of correct strength to be able to support the capacity of their usage.
- **Installation of all circuits should ensure that their function can be automatically tested on a regular basis (at least two times a year).**

INSTALLATION INSTRUCTIONS :

- **Before installing the valves, clean and remove any objects from the pipes** (in particular bits of sealing and metal) which could obstruct and block the valves.
- **Ensure that both connecting pipes either side of the valve (upstream and downstream) are aligned (if they're not, the valves may not work correctly).**
- **Make sure that the two sections of the pipe (upstream and downstream) match, the valve unit will not absorb any gaps. Any distortions in the pipes may affect the tightness of the connection, the working of the valve and can even cause a rupture.** To be sure, place the kit in position to ensure the assembling will work.
- **If sections of piping do not have their final support in place, they should be temporarily fixed. This is to avoid unnecessary strain on the valve.**
- Tighten the bolts in cross.
- It's recommended to operate the valve (open and close) 1 to 2 times per year