



figure

823

ends
formthreaded
Y-type **STRAINERS**

body material	nominal pressure	nominal diameter	max temperature
A grey cast iron	C 16 bar	DN 10-80	200°C



correspond to the pressure equipment directive 97/23/EC
marking CE for Dn≥32

FEATURES

- compact settlement
- environment-friendly
- tests acc. EN - 12266 - 1
- screen made of stainless steel
- cleaning of screen without disassembling

APPLICATION

- hot and cold water plants
- steam plants
- industrial technologies
- power engineering
- heat engineering
- refrigeration and air conditioning

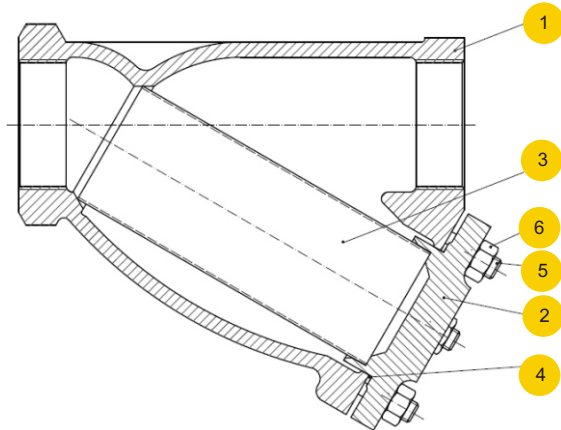
Data given can be changed without notice.

Edition 06/2013

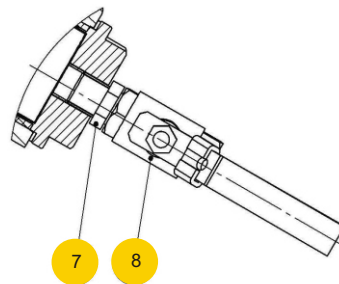
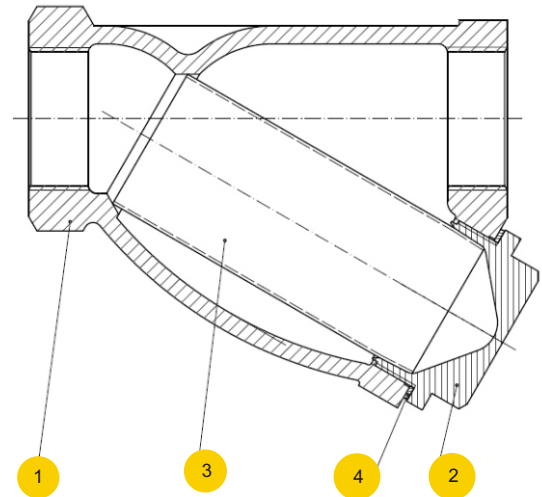


MATERIALS

type 09;10 (DN 50-80)



type 10 (DN 10-40)



body material		A	
type		10 (DN 10-40)	09;10 (DN 50-80)
1	body	EN – GJL-250 JL1040	
2	cover	EN-GJS-500-7* JS1050	EN – GJL-250 JL1040
3	screen	X5CrNi 18-10 1.4301	
4	gasket	carbamide-caoutchouc	
5	studs	-----	8.8 A2A
6	hexagon nut	-----	8-A2A
5	nypel**	3/8-3/8"	1/2-1/2"
6	ball valve**	3/8"	1/2"
max. temperature		200°C	

* for type with ball valve CuZn40Pb

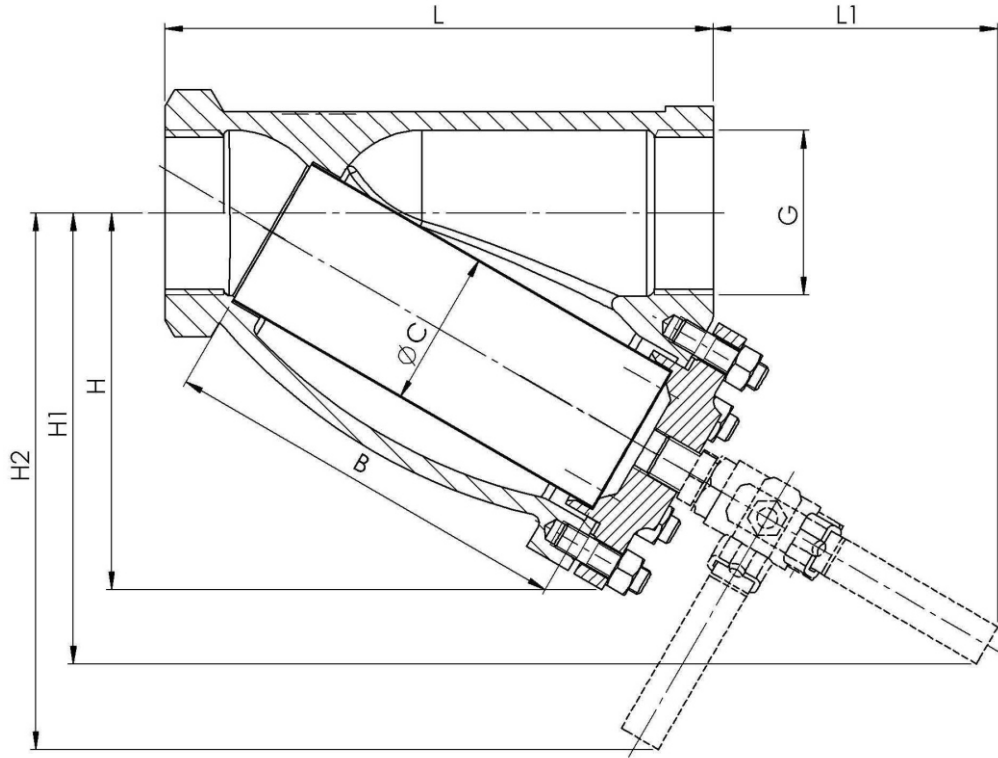
** on client's request type with ball valve (max. Temp.180°C)

Data given can be changed without notice.

Edition 06/2013



DIMENSIONS



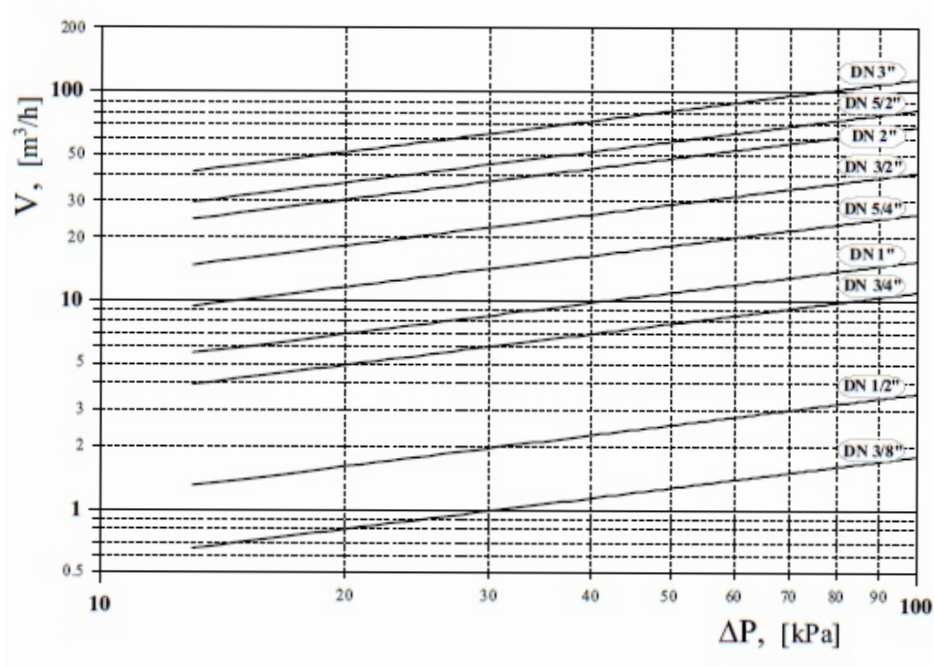
DN	PN 16									with ball valve		seal size		
	G	L	L1	H	H1	H2	C	B	Kvs			Ø Dz	Ø Dw	g
mm									m ³ /h	kg	kg	mm		
10	3/8"	72	-	45	-	-	18	48	1,8	0,3	-	30	23	1,5
15	1/2"	85	115	52	80	105	23	56	3,6	0,5	0,72	35	28	
20	3/4"	100	115	62	90	112	28	68	11,0	0,8	1,02	42	34	
25	1"	120	115	73	110	122	36	82	15,5	1,1	1,32	50	42	
32	1 1/4"	140	115	86	114	132	42	98	26,0	1,9	2,12	57	48	
40	1 1/2"	160	115	98	126	146	50	114	41,0	2,5	4,17	65	56	
50	2"	205	110	144	172	204	60	154	68,0	6,1	6,32	76	66	
65	2 1/2"	245	110	172	200	232	76	187	82,0	8,5	8,79	92	82	
80	3"	265	110	186	224	246	83	200	115	12,0	12,29	100	89	

Data given can be changed without notice.

Edition 06/2013



HYDRAULIC CHARACTERISTIC



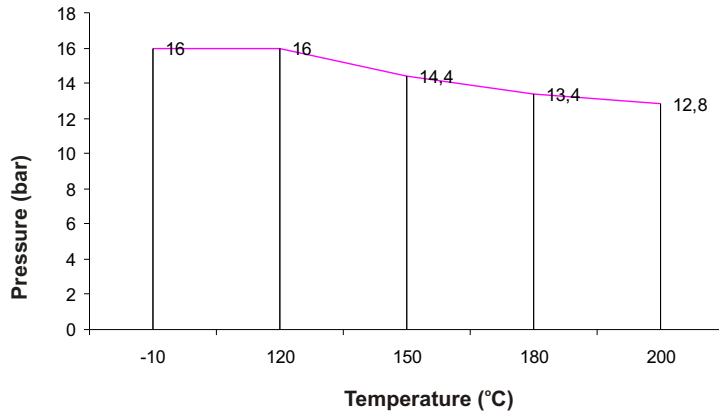
SCREENS

screen	type	DN	mash	meshes screen	performance
standard	F45	10-50	1,0	45	10
	F28	65-80	1.25	28	09
other performance	screen cartridges F100 (0,6), F200 (0,5), F300 (0,4), F400 (0,32), F600 (0,25)				



figure	823
ends form	threaded Y-type

PRESSURE-TEMPERATURE RATINGS



Allowed working conditions range
PN 16 EN-GJL-250



figure **823**

ends form threaded Y-type

TYPES

figure	body material	nominal diameter DN	nominal pressure PN	type
823	A grey cast iron EN-GJL-250	10-50 mm	C 16bar	10 • mesh 1,00 mm, 45 mesh/cm2 Tmax 200 °C
		65-80 mm	C 16bar	09 • mesh 1,25 mm, 28 mesh/cm2 Tmax 200 °C
		10-50 mm	C 16bar	30 • mesh 1,00 mm, 45 mesh/cm2 • with magnetic cartridge Tmax 200 °C
		65-80 mm	C 16bar	29 • mesh 1,25 mm, 28 mesh/cm2 • with magnetic cartridge Tmax 200 °C
		10-80 mm	C 16bar	04 • mesh 0,63 mm, 100 mesh/cm2 Tmax 200 °C
		10-80 mm	C 16bar	05 • mesh 0,50 mm, 200 mesh/cm2 Tmax 200 °C
		10-80 mm	C 16bar	06 • mesh 0,40 mm, 300 mesh/cm2 Tmax 200 °C
		10-80 mm	C 16bar	07 • mesh 0,32 mm, 400 mesh/cm2 Tmax 200 °C
		10-80 mm	C 16bar	08 • mesh 0,25 mm, 600 mesh/cm2 Tmax 200 °C
		10-80 mm	C 16bar	24 • mesh 0,63 mm, 100 mesh/cm2 • with magnetic cartridge Tmax 200 °C
		10-80 mm	C 16bar	25 • mesh 0,50 mm, 200 mesh/cm2 • with magnetic cartridge Tmax 200 °C
		10-80 mm	C 16bar	26 • mesh 0,40 mm, 300 mesh/cm2 • with magnetic cartridge Tmax 200 °C
		10-80 mm	C 16bar	27 • mesh 0,32 mm, 400 mesh/cm2 • with magnetic cartridge Tmax 200 °C
		10-80 mm	C 16bar	28 • mesh 0,25 mm, 600 mesh/cm2 • with magnetic cartridge Tmax 200 °C

*on client's request type with ball valve (max. temp.180°C)

Data given can be changed without notice.

Edition 06/2013



figure	823
ends form	threaded Y-type

ORDERING

To place an order please use our product number (index)



ORDER EXAMPLE

